

# V&A

Knitting patterns – womenswear

Fair Isle jumper

# STITCHCRAFT

MAR  
1958

16

FREE  
INSIDE

SEPARATES  
for SPRING

special two-colour supplement  
of latest designs for the  
family to knit on your  
machine and by hand

FLASH

BUMPER  
SPRING  
NUMBER

with extra  
pages  
and extra  
features







# Colour

*is all  
the rage again  
using traditional  
motifs in striking  
colours – black  
with sparkling jade  
and white*

N.B. — B. = Black.  
J. = Sparkling Jade.

## FRONT

\*\* With No. 11 needles and B. wool, cast on 101 sts. and work 4 ins. k. 1, p. 1 rib, rows on right side having a k. 1 at each end.

Change to No. 9 needles and stocking-stitch, starting with a knit row, and shape sides by increasing 1 stitch at each end of 7th and every following 6th row until there are 121 sts. Work straight until front measures 13 ins.

down centre, ending with a purl row.

Here start to shape armholes. Cast off 5 sts. at beginning of next 2 rows. Now change to No. 8 needles and work from chart, shaping raglans by decreasing 1 stitch at each end of next and every alternate row. Read every row on chart from right to left to centre-stitch, then back again from left to right from centre stitch.

When the 36 rows of chart are done you will have 75 sts. on needle. Break B. wool \*\*.

**Materials:** Of Patons Quickerknit Botany, Patonised, 9 ozs. Black, 2 ozs. Sparkling Jade 6074 and a small ball (less than  $\frac{1}{2}$  oz.) in White. A pair each No. 11, No. 9 and No. 8 "Queen Bee" needles. A set of four No. 11 "Queen Bee" needles, pointed both ends. A 4-inch light-weight zip fastener.

**Measurements:** To fit 34–35-inch bust; length from top of shoulders, 21 ins.; sleeve seam, 17 $\frac{1}{2}$  ins.

**Tension:** 6 $\frac{1}{2}$  sts. and 8 $\frac{1}{2}$  rows to an inch over stocking-stitch on No. 9 needles.



# in knitting

Change to No. 9 needles and continue in stocking-stitch in J., decreasing 1 stitch at each end of next and every alternate row until 69 sts. remain. NEXT ROW: Purl.

Here shape neck. NEXT ROW: k. 2 tog., k. 23, turn and leave remaining stitches on a spare needle. Continue shaping neck and armhole by decreasing 1 stitch at each end of every row until 12 sts. remain. Now keep neck edge straight and continue decreasing 1 stitch at armhole edge on every row until all stitches are gone. Fasten off.

With right side facing, slip centre 19 sts. on a spare needle, rejoin wool to remaining 25 sts., knit to last 2 sts., k. 2 tog. Finish to correspond with first shoulder.

## BACK

Work as for front from \*\* to \*\*. Change to No. 9 needles and continue in J., dividing for neck as follows:—NEXT ROW: k. 2 tog., k. 34, k. 2 tog., turn and leave remaining 37 sts. on a spare needle.

Continue on these 36 sts. decreasing 1 stitch at armhole edge at beginning of every knit row until 32 sts. remain, then on every row at this edge until 17 sts. remain. Leave these stitches on a spare needle.

With right side facing, rejoin wool to remaining 37 sts., knit to last 2 sts., k. 2 tog. Finish to correspond with first shoulder.

## SLEEVES

With No. 11 needles and B. wool, cast on 53 sts. and work 3 ins. k. 1, p. 1 rib, rows on right side having a k. 1 at each end.

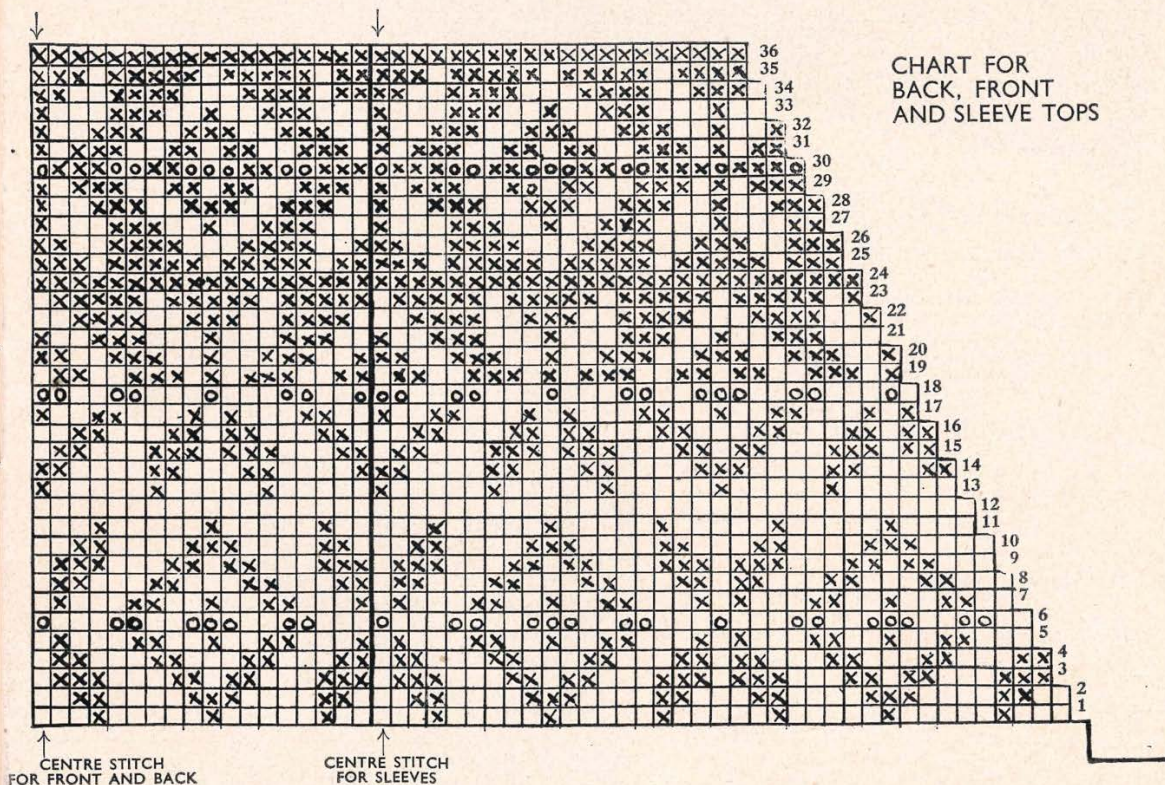
With right side facing, change to No. 9 needles and stocking-stitch, shaping sides by increasing  
*please turn to page 32*

## KEY

☐ WHITE

⊗ JADE

□ BLACK





## FAIR ISLE JUMPER

*continued from page 13*

1 stitch at each end of 13th and every following 6th row until there are 85 sts. Work straight until sleeve seam measures  $17\frac{1}{2}$  ins. ending with a purl row.

Here shape top. Cast off 5 sts. at beginning of next 2 rows. Now change to No. 8 needles and work from

chart, shaping raglan top by decreasing 1 stitch at each end of next and every alternate row. Read every row on chart from right to left to centre stitch, indicated for sleeve, then back again from left to right from centre stitch.

When the 36 rows of chart are done you will have 39 sts. on needle. Break B. wool. Change to No. 9 needles and continue in stocking-stitch in J., decreasing 1 stitch at each end of next and every alternate row until 23 sts. remain. Purl back, then decrease 1 stitch at each end of every row until 7 sts. remain. Cast off.

### TO MAKE UP

Press parts on wrong side under a damp cloth, avoiding ribbing. Join raglan seams, matching pattern carefully. Join side and sleeve seams.

*Neckband:* Using the set of four No. 11 needles to facilitate working, pick up and k. 103 sts. all round neck, including stitches on spare needles. Work backwards and forwards in k. 1, p. 1 rib for 1 inch. Cast off loosely in rib. Press all seams.

Insert zip up back opening.

*"Fair Isle is back"*



*it's quite easy to do  
as only 2 colours are  
used on any row in the pattern*